

A. Discussion Regarding Northwest Fire Medical Direction and the Physician One Specialized Physician Response Program



**Northwest Fire District
Governing Board**
13535 North Marana Main Street
Marana, Arizona

SCHEDULED

MEMORANDUM NO. 24-1031

Date: December 10, 2024
To: Governing Board
From: Samantha Beal, Administrative Assistant
Division: Medical Director
Type of Action: Information Only
Strategic Plan Goals: Innovate to provide the highest quality services to meet our mission.
Agenda Item: Discussion Regarding Northwest Fire Medical Direction and the Physician One Specialized Physician Response Program

RECOMMENDATION:

Information only.

MOTION:

Information only.

DISCUSSION:

Dr. Amber Rice will provide a Medical Direction update on the grant awarded by the US Department of Transportation to expand the Physician One Program capabilities.

ALTERNATIVES:

Information only.

Fiscal Impact

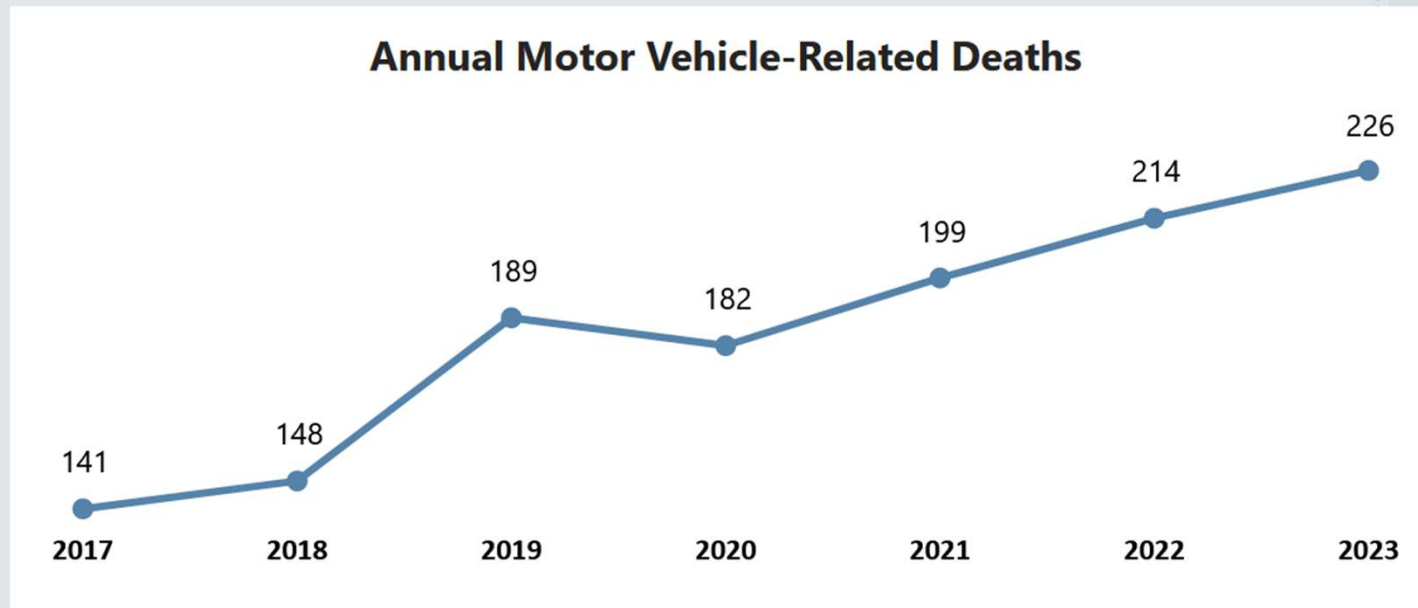
FISCAL YEAR: 24/25
BUDGETED Y/N: N/A
AMOUNT REQUESTED: N/A
FISCAL IMPACT: N/A

Attachments

Physician One Program Presentation



Physician One Program



Since 1994, Arizona has experienced a 31% increase in crash fatalities, marking the 4th highest increase in the country over this period

Arizona ranks 5th in the nation for pedestrian fatalities at 17.2 per 100,000 population according to data from the Department of Transportation

U.S. Department of Transportation SS4A Grant




The program aims to prevent roadway deaths and serious injuries, emphasizing safety improvements for all road users, including pedestrians, cyclists, public transit riders, and motorists.



It supports the Vision Zero initiative, which seeks to eliminate fatalities on U.S. roadways.

Can EMS physicians improve outcomes for victims of roadway traffic accidents ?

Aim 1: Implement a physician staffed EMS resource available during peak call hours to respond to 911 calls.



Aim 2: Evaluate the impact of that resource on patients with major trauma sustained in roadway accidents.

Expansion of current capabilities

- Improved capabilities
- Available during peak hours, 365 days a year.
- Deliver services across the Tucson Metropolitan Area

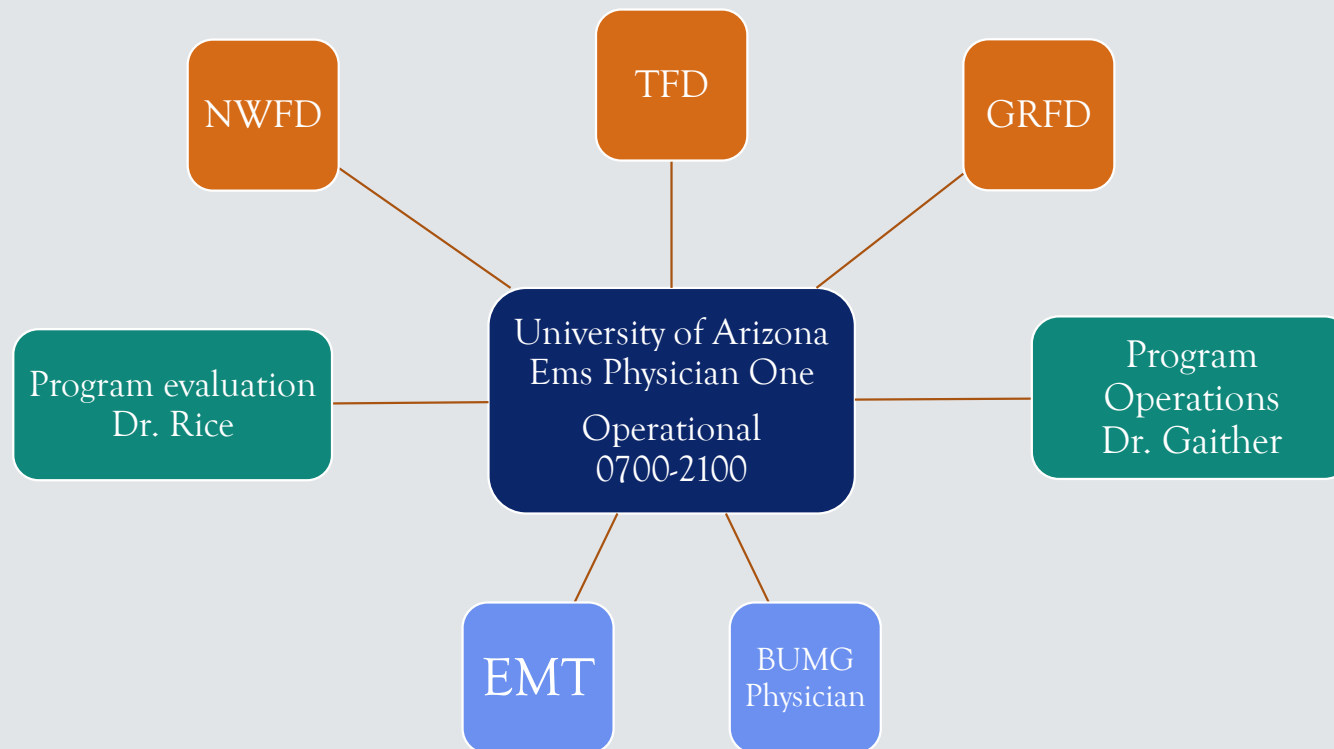
EMS FIELD PHYSICIANS

- *Board certified EMS physicians
- *Faculty at the University of Arizona, College of Medicine
- *Medical direction and oversight for numerous EMS agencies in Southern Arizona
- *Staff "Physician 1"
- *Provide on-scene medical control and education to field crews in the Tucson metro area



 <p>Dan Beskind, MD Medical Director: BUMC-SC Base Hospital Arizona Ambulance Transport</p>	 <p>Tyrel Fisher, MD Associate Medical Director: Northwest Fire District</p>	 <p>Robert French, MD Assistant Medical Director: Special Operations HAZMAT, TRT</p>	 <p>Josh Galtner, MD Medical Director: Tucson Fire Department</p>	 <p>Philipp Hanhan, MD Medical Director: UAEMS Associate Medical Director: Tucson Fire Department</p>
 <p>Mary Knotts, MD Associate Medical Director: Golder Ranch Fire District</p>	 <p>Joseph Liu, DO EMS Fellow</p>	 <p>Rachel Munn, DO Associate Medical Director for Education: Tucson Fire Department Golder Ranch & Northwest Fire Districts</p>	 <p>Amber Rice, MD Medical Director: Northwest Fire District Golder Ranch Fire District</p>	 <p>Jennifer Smith, MD Associate Medical Director: Arizona Ambulance Transport</p>

Physician One Program Structure



Timeline

- Q3-4, 2024: Planning
- Q1-2, 2025: Equipment purchase and implementation
- Q3-4, 2025: Operations Cycle 1
- Q1-2, 2026 to Q4 2028: Operations Cycle 2 - 8
- Q1-2 2029: Reporting, Request Implementation Funding
Implementation project: 2029-2034

Building on existing resources

EMS Physician One in
operation since 2021

Work supported by our
agency partners

More than 1000 field
responses

911 responses

Special events: El Tour de
Tucson, Starliner training,
political rallies, etc.

MCI and Special
Operations support

Benefits to Fire Districts

Enhanced Patient Outcomes

Support for Paramedics

- The EMS physician offers valuable **clinical support** for paramedics in high-acuity situations, helping them manage complex medical needs in the field and serving as an additional resource.

Increased Efficiency and Coordination

- Early communication between the EMS physician and the receiving hospital ensures smoother **transitions of care** and quicker access to advanced hospital resources.

Community-Focused, Grant-Funded Initiative

- Funded entirely by a federal grant, the Physician 1 Program adds significant value to fire districts without additional cost, allowing for enhanced emergency care resources to benefit the community.

Emergency Response Partners

- ♦ Oversight Board:
 - TFD, NWFD, GRFD
 - UA Public Safety
 - UA Legal, UA Risk
- ♦ Communications: City of Tucson & PCWIN contracted dispatch services
- ♦ BUMG: Physician Services
- ♦ University EMS: EMS Provider Services

Thank you!